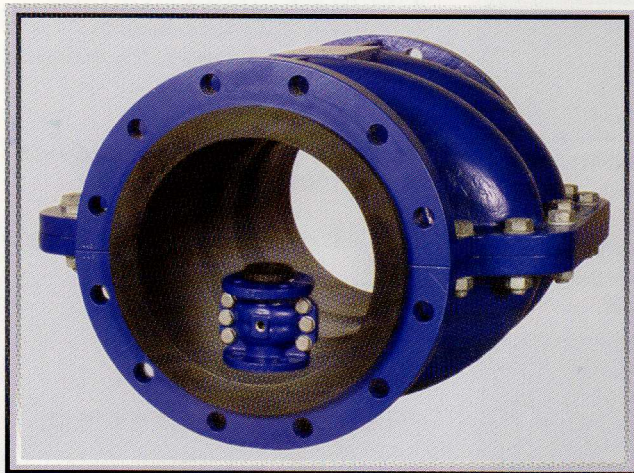




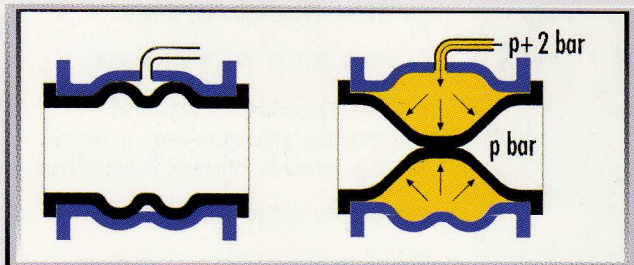
PATENTED VALVE WORLD CLASS PERFORMANCE TECHNOLOGY

**The New Global Standard for
Abrasive, Scaling and
Corrosive Slurries, Sludges,
Liquids and Powders**

aiRFlex®



**DN 25-350, Full Port ASME/ISO
Length Face-to-Face
INTERCHANGEABLE with most
Ball, Plug, Gate, Globe Valves**



OPERATING BENEFITS

- No moving parts; only one wear-resistant elastomer component
- Self-cleaning; will not jam or seize
- Seals on solids; gentle closing
- Superior price performance, as no actuator or costly maintenance required
- Non-stretch folds significantly extend tube life over conventional design
- Full-port opening
- In-line tube change
- Actuation by air or hydraulic
- Tube wear monitoring

The patented tube folds minimize stretching when air is introduced between the valve body and the tube to close the valve.

This allows the use of reinforcing cords to improve the most frequent cause of failure of conventional air-actuated pinch valves.

ELASTOMERS:

NR, SBR, CR, IIR, NBR, FPM, CSM, EPDM

VALVE BODY:

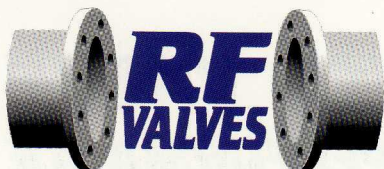
- Cast iron • Aluminum
- Stainless steel and titanium available on request

ACTUATION & CONTROL:

- On/Off solenoid valve/filter/regulator
- Modulating 4-20 mA proportional pressure controller



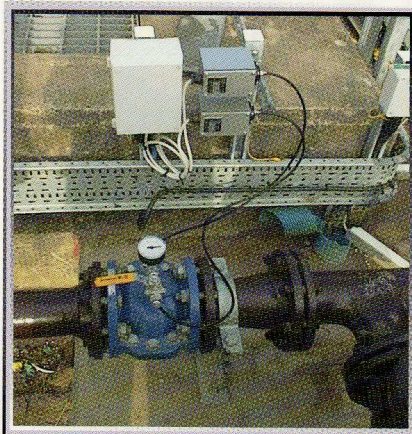
Elastomer tube folds flex, not stretch, during valve closing.



PATENTED VALVE WORLD CLASS PERFORMANCE TECHNOLOGY

ACCESSORIES:

- Solenoid valve and filter/regulator
- Quick-opening system
- Pressure switches
- On/Off indicators



- Open/Closed indicator
- Fail-close operation
- Optional MONSYS Wear Sensor System
- 4-20 mA proportional modulating control



APPLICATIONS:

MINING AND METALLURGY:

metal and mineral concentrates, tailings, lime and chemical addition, water, acids

INDUSTRIAL MINERALS:

titanium dioxide, carbonates, iron oxide, pigments, catalyst, kaolin, talc, potash, carbon, ceramics, glass, concrete, fiberglass, magnesium, silica

CHEMICALS:

abrasive and corrosive liquids or slurries

WATER AND WASTEWATER:

scaling-prone liquids and chemicals, primary and secondary sludge, grit, screening, flocculation

PNEUMATIC CONVEYING:

grains, cement, silica sand, pellets, fiber, ash, dust

FOOD AND BEVERAGE:

sugar, cereals, fruit and vegetable processing, juices, syrup, mash, waste handling

POWER GENERATION:

fly ash, scrubber slurries, cooling and reactor water, neutralization

STEEL:

quench water, pickling, chemical addition, process water, foundry sand, lime

PULP AND PAPER:

pulp, liquors, lime mud, coatings, rejects, recycle, dregs, corn starch, sand traps, junk traps

COMPETITIVE ADVANTAGES:

- ASME or ISO face-to-face
- Non-stretch elastomer tube
- Ability to change tube in line
- Interior/exterior powder coat
- Flange bolt holes are not threaded



DN mm	F-F mm	Width mm	Height ⁽¹⁾ mm	Cast iron kg	Aluminum kg
25	127	127	107	2.7	1.6
40	165	150	127	5	2.3
50	178	206	165	7.7	3.2
80	203	257	201	12.2	6.3
100	229	295	228	17	7.7
150	267	386	284	30	19.5
200	457	465	340	69	35
250	533	617	406	--	70
300	610	716	483	--	93
350	686	709	681	--	129

⁽¹⁾ Height given is without accessories

**RF TEK Ltd. • Koulukatu 19
FIN-53100 Lappeenranta, Finland
Tel. +358 5 415 0382 • Fax +358 5 415 0342
rfvalves@rftek.fi • www.rfvalve.com**

AJG waters (EQUIPMENT) LIMITED
PO Box 1853, Croydon,
Surrey CR9 7AW
Tel No: 020 8689 9994
Fax No: 020 8689 1715
Email: sales@watersequip.co.uk
www.watersequip.co.uk